

INTRODUCTION:

Adam Tech BHR Series .100" Box Headers are a dual row shrouded header for use with dual row IDC female socket connectors. Our low profile, space saving design has a center slot for the socket's polarization bump. Adam Tech's Box Headers are available in Straight PCB Mount, Right Angle PCB Mount and SMT Mounting. Plating options include choice of Gold, Tin or Selective Gold. SMT versions are manufactured with a Hi-Temp insulator. Additional options include latches and custom pin lengths.

FEATURES:

- Superior low profile design
- Slot for IDC socket Polarization bump
- Straight PCB, Right Angle PCB and SMT versions
- Gold, Tin or Selective Gold plating
- Options include Elevated types and integral latches
- Hi-Temp insulator available

MATING SOCKETS:

Adam Tech .100" X .100" dual row IDC sockets

SPECIFICATIONS:

Material:

Insulator: PBT, glass reinforced, rated UL94V-0
Optional Hi-Temp insulator: Nylon 6T, rated UL94V-0
Insulator Color: Black (Gray optional)
Contacts: Brass

Plating:

U = Gold over nickel underplate
SG = Gold over nickel underplate on contact area, tin over copper underplate on tails.
T = Tin over copper underplate overall

Electrical:

Operating voltage: 250V AC max.
Current rating: 1 Amp max
Contact resistance: 20 mΩ max. initial
Insulation resistance: 5000 MΩ min.
Dielectric withstanding voltage: 1000V AC for 1 minute

Mechanical:

Mating durability: 500 cycles min.

Temperature Rating:

Operating temperature: -40°C to +105°C

PACKAGING:

Anti-ESD plastic trays

SAFETY AGENCY APPROVALS:

UL Recognized File no. E224053



ORDERING INFORMATION

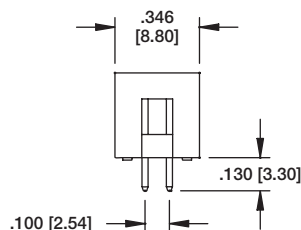
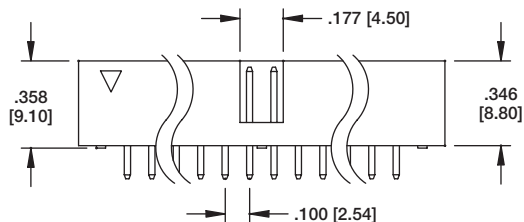
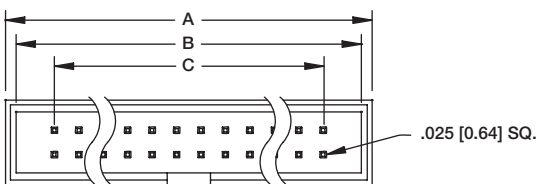
BHR	50	V	U	A
SERIES INDICATOR BHR = .100" Box Header	NO. OF POSITIONS 08, 10, 14, 16, 20, 24, 26, 30, 34, 40, 44, 50, 60, 64	MOUNTING ORIENTATION V = Straight Mount H = Right Angle Mount	CONTACT PLATING U = Gold Plated T = Tin Plated SG = Gold Plating in contact area, tin plated tails	PIN LENGTH A = Standard solder tail B = Special length, customer specified SMT = Surface Mount

OPTIONS:

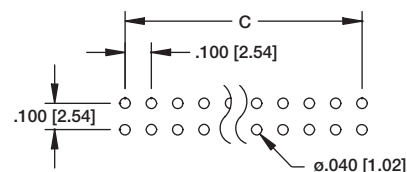
Add designator(s) to end of part number
LL = Box header with long plastic latches
SL = Box header with short plastic latches
ML = Box header with long metal latches
MS = Box header with short metal latches
30 = 30 μin gold plating in contact area
GY = Gray color insulator
HT = Hi-Temp insulator for Hi-Temp soldering processes up to 260°C (Add this option for thru-hole products only.
All SMT products are manufactured with Hi-Temp insulators)

BHR

STRAIGHT PCB MOUNT



BHR-34-VUA

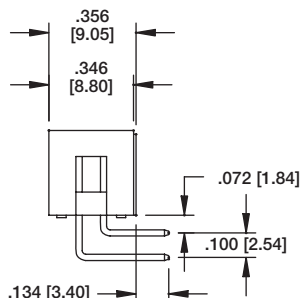
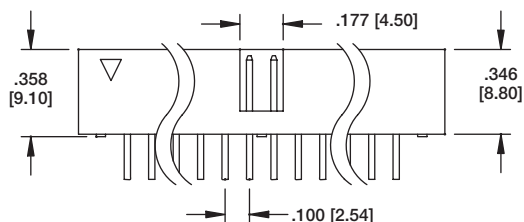
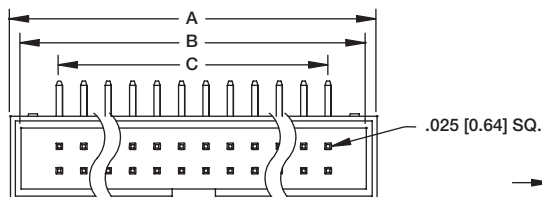


Recommended PCB Layout

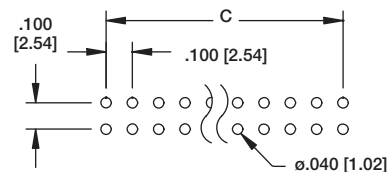
A = .100 [2.54] X No. of Positions / 2 + .300 [7.62]
B = .100 [2.54] X No. of Positions / 2 + .200 [5.08]
C = .100 [2.54] X No. of Spaces

BHR

RIGHT ANGLE PCB MOUNT



BHR-34-HUA

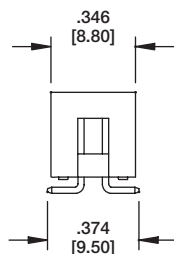
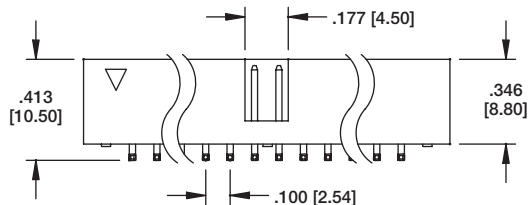
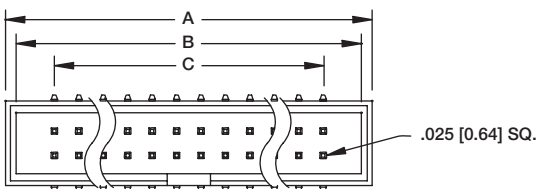


Recommended PCB Layout

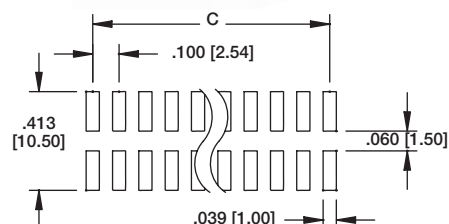
A = .100 [2.54] X No. of Positions / 2 + .300 [7.62]
B = .100 [2.54] X No. of Positions / 2 + .200 [5.08]
C = .100 [2.54] X No. of Spaces

BHR

SURFACE MOUNT



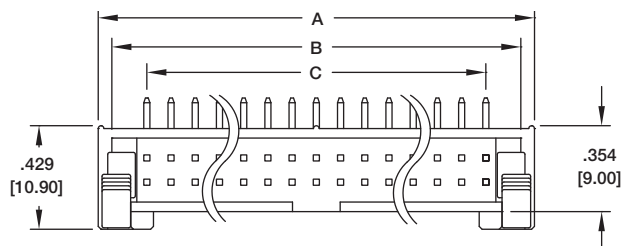
BHR-30-VSG-SMT



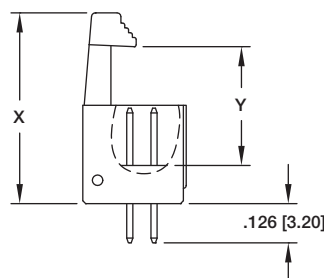
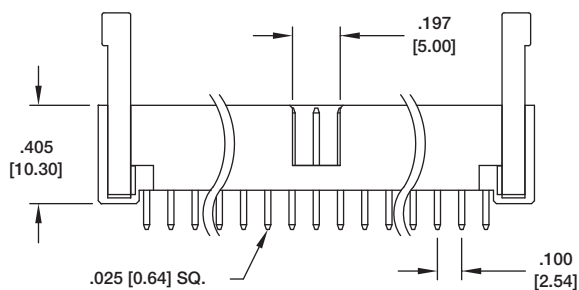
Recommended PCB Layout

A = .100 [2.54] X No. of Positions / 2 + .300 [7.62]
B = .100 [2.54] X No. of Positions / 2 + .200 [5.08]
C = .100 [2.54] X No. of Spaces

BHR STRAIGHT MOUNT BOX HEADER WITH LATCHES

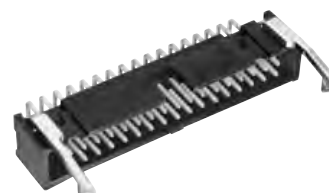
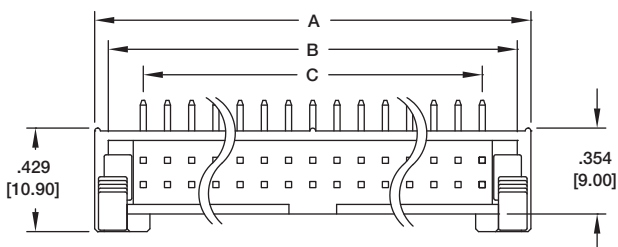


BHR-34-VUA-ML

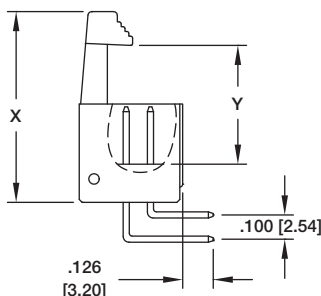
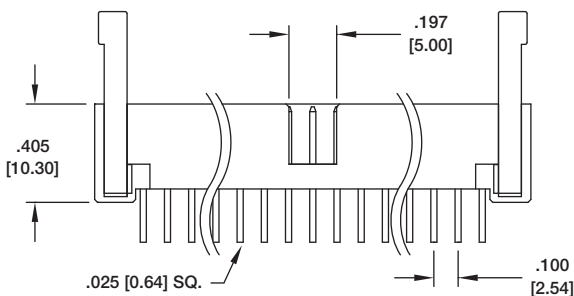


$$\begin{aligned} &= .100 [2.54] \times \text{No. of Positions} / 2 + .301 [7.66] \\ &= .100 [2.54] \times \text{No. of Positions} / 2 + .189 [4.80] \\ &= .100 [2.54] \times \text{No. of Positions} / 2 - 1 \end{aligned}$$

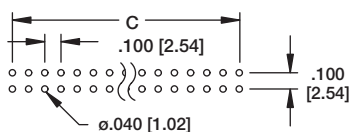
BHR RIGHT ANGLE MOUNT BOX HEADER WITH LATCHES



BHR-34-HUA-ML



$$\begin{aligned} A &= .100 [2.54] \times \text{No. of Positions} / 2 + .301 [7.66] \\ B &= .100 [2.54] \times \text{No. of Positions} / 2 + .189 [4.80] \\ C &= .100 [2.54] \times \text{No. of Positions} / 2 - 1 \end{aligned}$$



Recommended PCB Layout

LATCH TYPE	DIMENSIONS	
	X	Y
LONG LATCH (-ML)	1.035 [26.30]	.575 [14.60]
SHORT LATCH (-MS)	.901 [22.90]	.417 [10.60]

INTRODUCTION:

Adam Tech BHRE Series Elevated Box Headers provide all of the advantages of our standard Box Headers such as our Low Profile design, snug fit & polarized mating but have additional plastic insulators in place to stabilize rows of pins for stacking applications. This series is available in Straight, Right Angle & SMT mounting with standard or customer specified Stacking Heights and PCB tail lengths.

FEATURES:

Elevated for Stacking applications
Low Profile design
Straight, Right Angle & SMT mounting options
Standard or customer specified Stacking Heights & PCB tail lengths

MATING SOCKETS:

Adam Tech .100" X .100" dual row IDC sockets

SPECIFICATIONS:

Material:

Insulator: PBT, glass reinforced, rated UL94V-0
Optional Hi-Temp insulator: Nylon 6T, rated UL94V-0
Insulator Color: Black (Gray optional)
Contacts: Brass

Plating:

U = Gold over nickel underplate
SG = Gold over nickel underplate on contact area, tin over copper underplate on tails.
T = Tin over copper underplate overall

Electrical:

Operating voltage: 250V AC max.
Current rating: 1 Amp max
Contact resistance: 20 mΩ max. initial
Insulation resistance: 5000 MΩ min.
Dielectric withstanding voltage: 1000V AC for 1 minute

Mechanical:

Mating durability: 500 cycles min.

Temperature Rating:

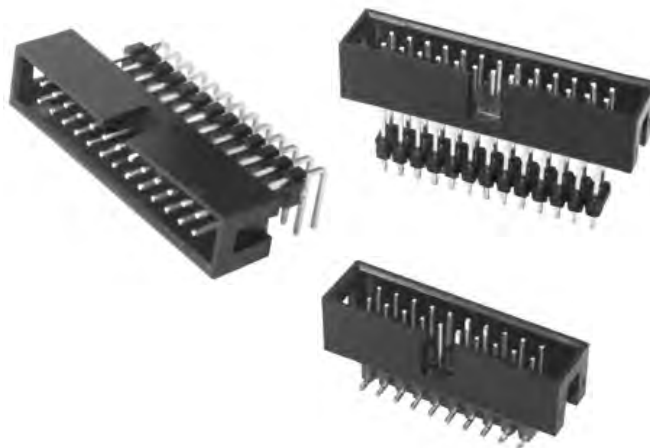
Operating temperature: -40°C to +105°C

PACKAGING:

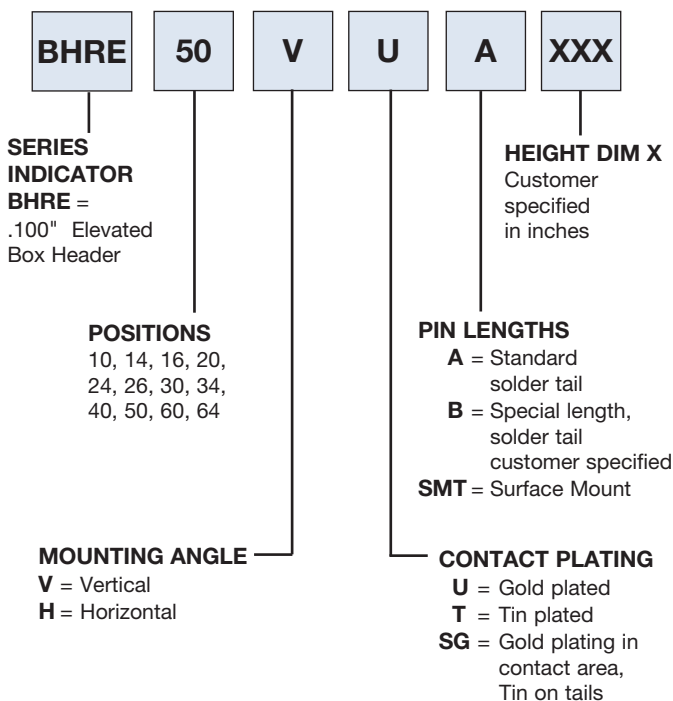
Anti-ESD plastic trays

SAFETY AGENCY APPROVALS:

UL Recognized File no. E224053



ORDERING INFORMATION



OPTIONS:

Add designator(s) to end of part number

30 = 30u" Gold on contact area

GY = Gray color insulator

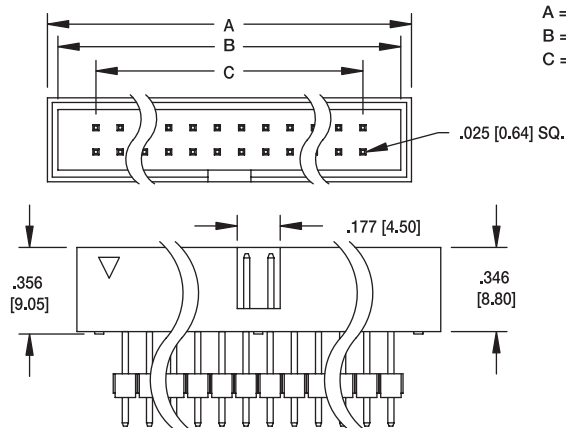
HT = Hi-Temp insulator for Hi-Temp soldering processes up to 260°C (Add this option for thru-hole products only.)

All SMT products are manufactured with Hi-Temp insulators)

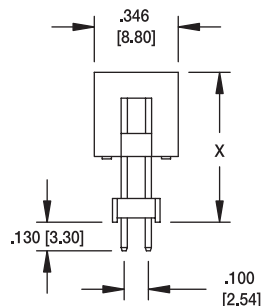


BHRE

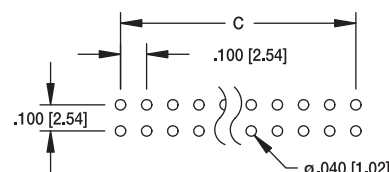
ELEVATED STRAIGHT PCB MOUNT



A = .100 [2.54] X No. of Positions / 2 + .300 [7.62]
B = .100 [2.54] X No. of Positions / 2 + .200 [5.08]
C = .100 [2.54] X No. of Spaces

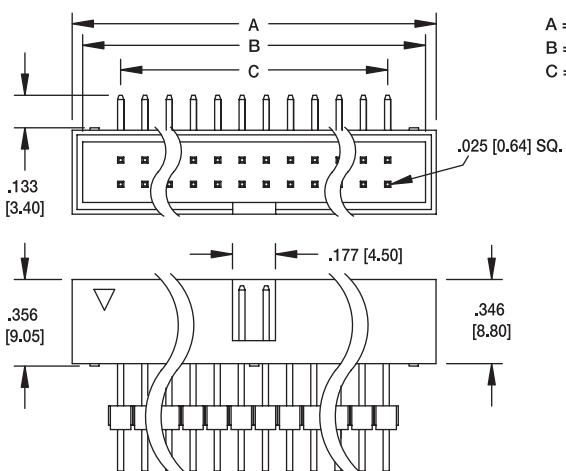


BHRE-26-VUA-.477

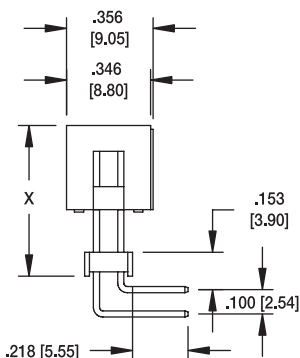


BHRE

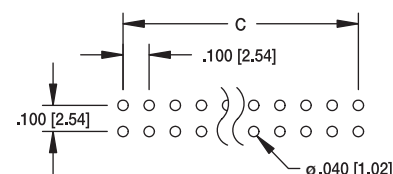
ELEVATED RIGHT ANGLE PCB MOUNT



A = .100 [2.54] X No. of Positions / 2 + .300 [7.62]
B = .100 [2.54] X No. of Positions / 2 + .200 [5.08]
C = .100 [2.54] X No. of Spaces

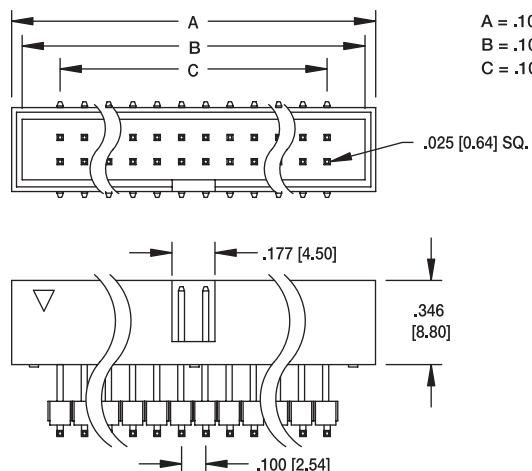


BHRE-26-HUA-.477

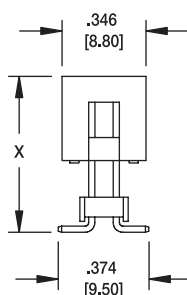


BHRE

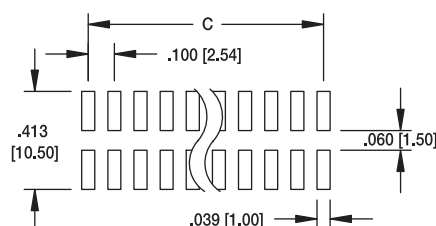
ELEVATED SMT



A = .100 [2.54] X No. of Positions / 2 + .300 [7.62]
B = .100 [2.54] X No. of Positions / 2 + .200 [5.08]
C = .100 [2.54] X No. of Spaces



BHRE-20-VU-SMT-.477



INTRODUCTION:

Adam Tech MHR Series .100" pitch Latch Headers are dual row, PCB mounted, shrouded headers with latches for use with dual row IDC female socket connectors. In addition to providing a shock and vibration proof connection the locking latches also act as ejectors to remove the mating socket. Our low profile, space saving design has a center slot for the socket's polarization bump. Adam Tech's Latch Headers are available in Straight PCB Mount, Right Angle PCB and SMT Mounting. Plating options include choice of Gold, Tin or Selective Gold

FEATURES:

Integral Latches provide Shock and Vibration Proof connection
Slot for IDC socket Polarization bump
Straight PCB, Right Angle PCB and SMT versions
Gold, Tin or Selective Gold plating
Elevated option available
Hi-Temp insulator available

MATING SOCKETS:

.100" X .100" Dual row IDC sockets

SPECIFICATIONS:

Material:

Insulator: PBT, glass reinforced, rated UL94V-0
Insulator Color: Black (Gray optional)
Contacts: Brass

Plating:

U = Gold over nickel underplate overall
SG = Gold over nickel on contact area,
Tin over copper underplate on tails.
T = Tin over copper underplate overall

Electrical:

Operating voltage: 250V AC max.
Current rating: 3 Amps max
Contact resistance: 20 mΩ max. initial
Insulation resistance: 5000 MΩ min.
Dielectric withstanding voltage: 1000V AC for 1 minute

Mechanical:

Mating durability: 500 Cycles min.

Temperature Rating:

Operating temperature: -40°C to +105°C

PACKAGING:

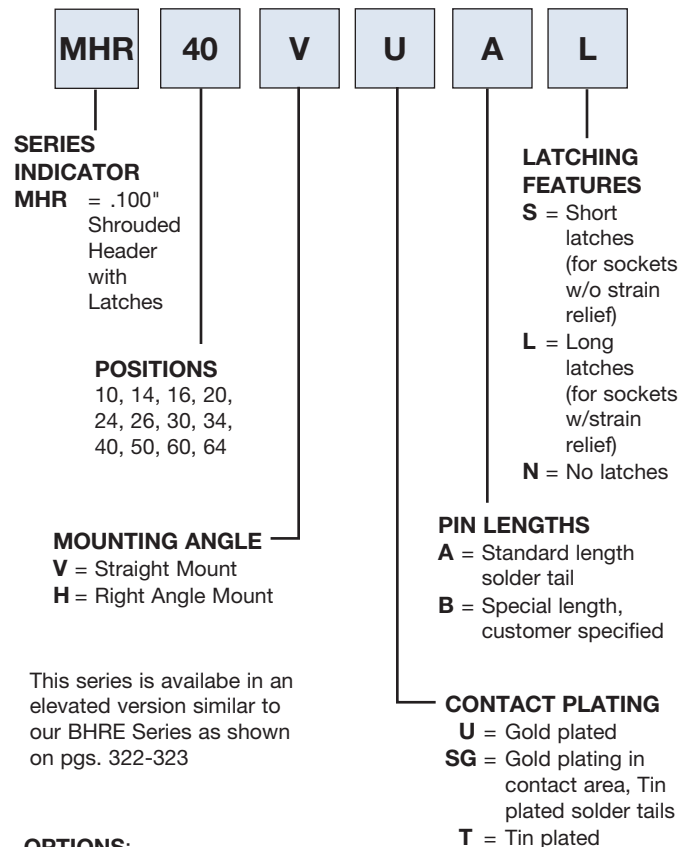
Anti-ESD plastic trays

SAFETY AGENCY APPROVALS:

UL Recognized File no. E224053



ORDERING INFORMATION



This series is available in an elevated version similar to our BHRE Series as shown on pgs. 322-323

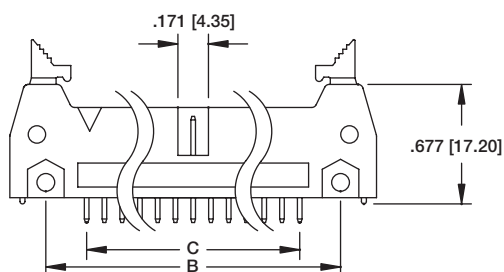
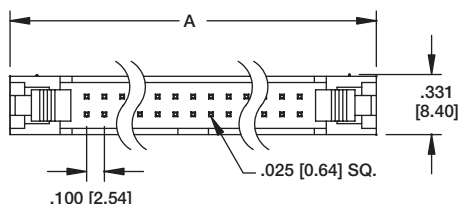
OPTIONS:

Add designator(s) to end of part number

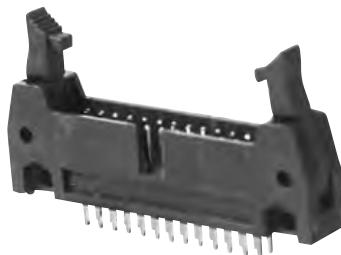
GY = Gray color insulator

HT = High-temp insulator for high-temp soldering processes

A = .100 [2.54] x No. of Spaces + .860 [21.84]
B = .100 [2.54] x No. of Spaces + .460 [11.68]
C = .100 [2.54] x No. of Spaces

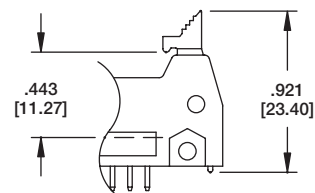


MHR STRAIGHT PCB MOUNT

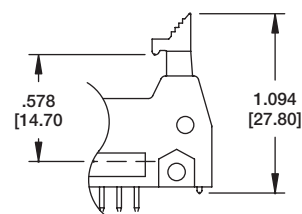


MHR-26-VUAL

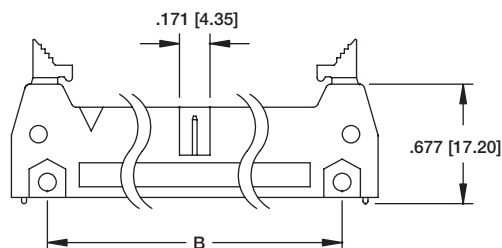
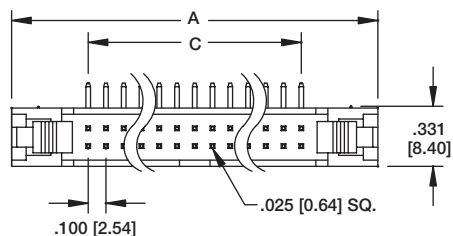
Latch Options



Header with Short Ejector/Latch for
Sockets without Strain Reliefs



Header with Long Ejector/Latch for
Sockets with Strain Reliefs

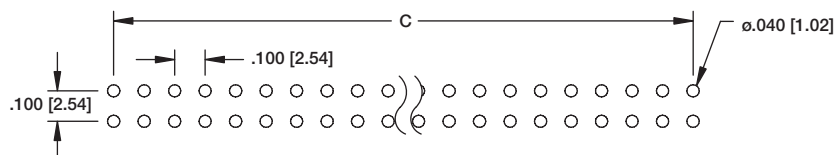


A = .100 [2.54] x No. of Spaces + .860 [21.84]
B = .100 [2.54] x No. of Spaces + .460 [11.68]
C = .100 [2.54] x No. of Spaces



MHR-26-HUAL

MHR RIGHT ANGLE PCB MOUNT



Recommended PCB Layout